

Congenital Neurologic Abnormalities: *Sample Questions for USMLE Step One*



Benjamin Tanenbaum
UMass Class of 2021

Sample questions to follow...

www.12daysinmarch.com
email: Howard@12daysinmarch.com



**Q1. Infant has cleft lip, omphalocele, rocker-bottom feet.
What else might be expected in this child?**

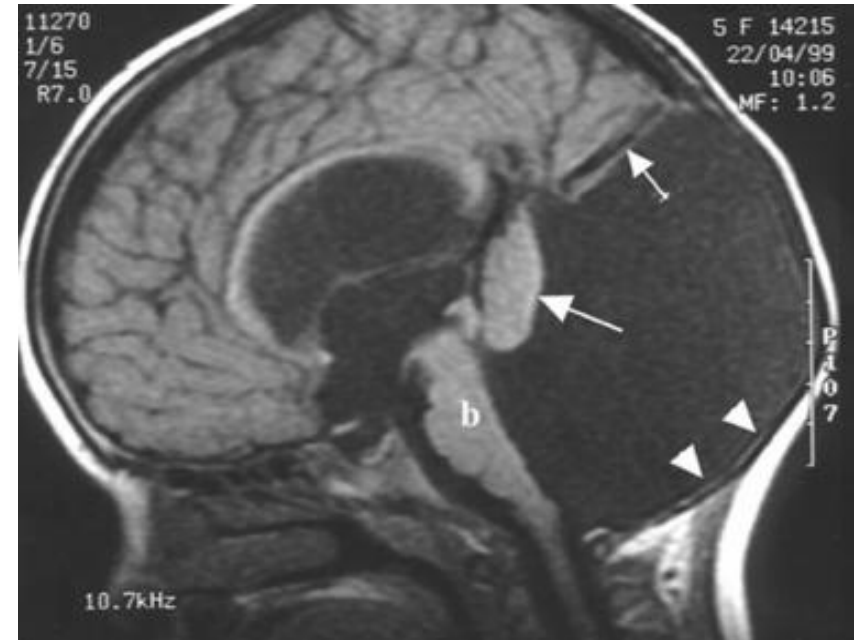
- A) Three copies of chromosome 18
- B) A single ventricle on MRI
- C) Chiari II malformation
- D) Spina bifida occulta
- E) Dandy-Walker Malformation

**Q1. Infant has cleft lip, omphalocele, rocker-bottom feet.
What else might be expected in this child?**

- A) Three copies of chromosome 18
- B) A single ventricle on MRI (*trisomy 13*)**
- C) Chiari II malformation
- D) Spina bifida occulta
- E) Dandy-Walker Malformation

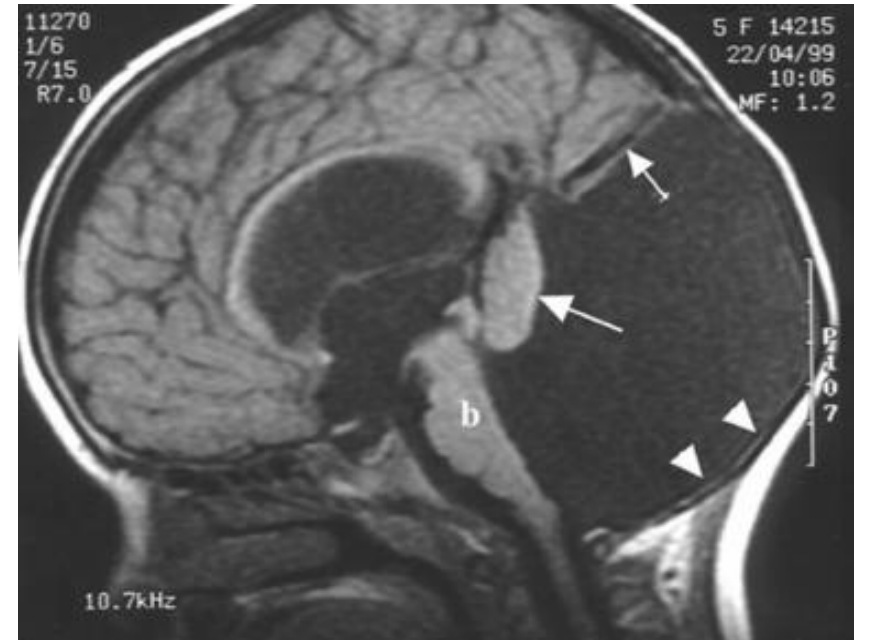
**Q2. 4 year old kid keeps falling.
Here's his MRI. He has:**

- A) A vermis defect
- B) A neural tube defect
- C) Chiari 1 malformation
- D) Syringomyelia
- E) A cerebellar tumor



**Q2. 4 year old kid keeps falling.
Here's his MRI. He has:**

- A) A vermis defect**
- B) A neural tube defect
- C) Chiari 1 malformation
- D) Syringomyelia
- E) A cerebellar tumor



Put on your
white coat!

While viewing this standardized patient interview, bear in mind you will be looking to make a diagnosis based on the clinical presentation and neuroimaging (to be provided).

This patient has:

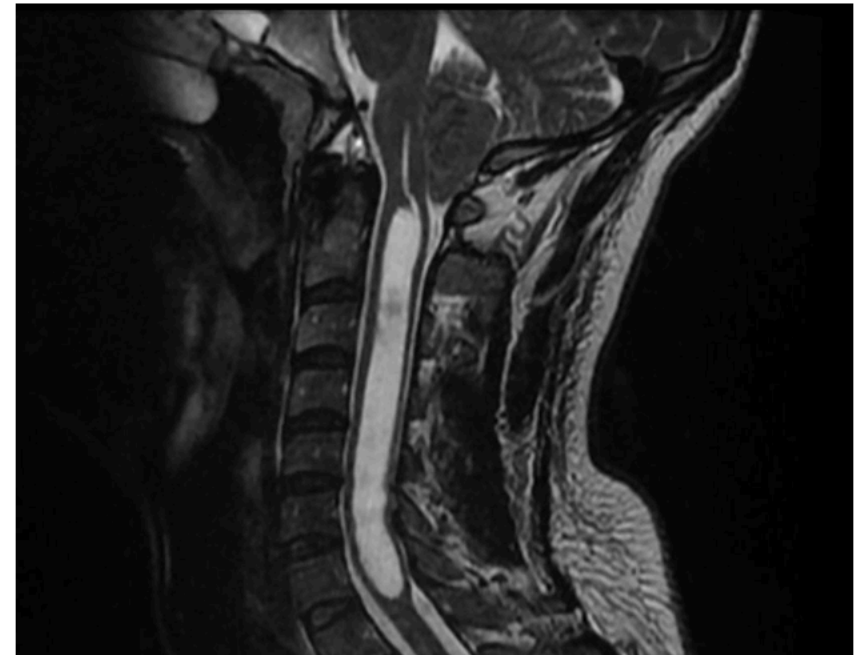
- A) Syringomyelia
- B) Dandy-Walker Malformation
- C) Chiari I malformation
- D) Chiari II Malformation
- E) Meningocele

Summary: one year intermittent headache with development of upper extremity weakness and subjective loss of coordination. Physical exam reveals loss of temperature sensation in upper extremity and back with intact vibratory sensation. Bilateral upper extremity weakness is noted.

An MRI is ordered and shown below.

This patient most likely has:

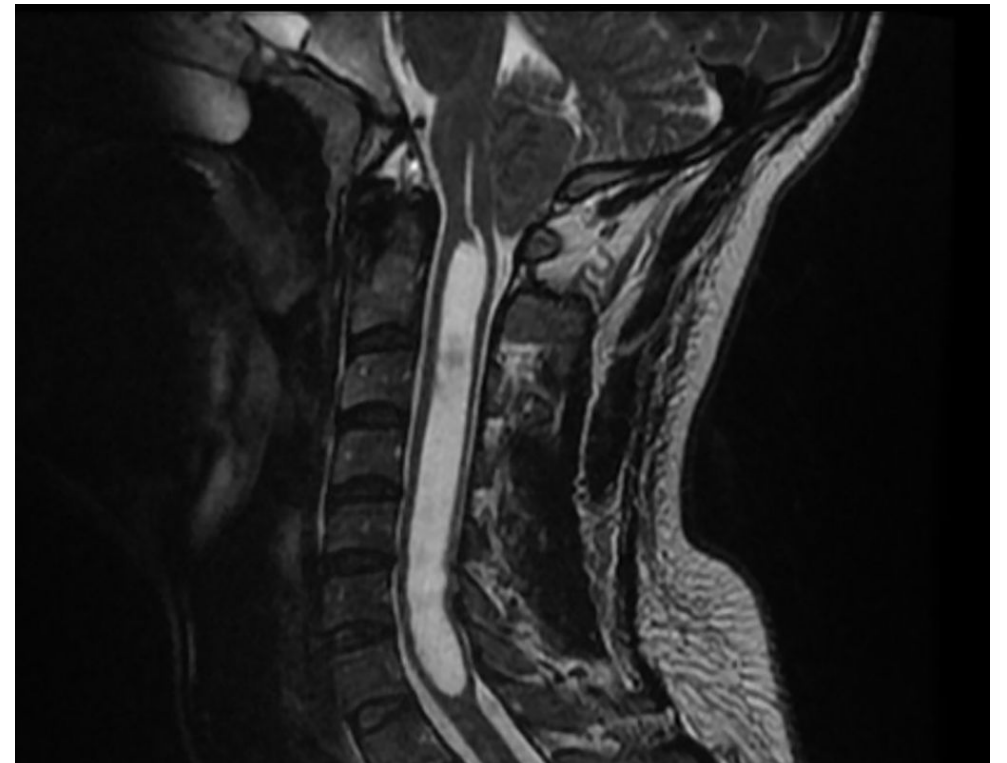
- A) Syringomyelia
- B) Dandy-Walker Malformation
- C) Chiari I malformation
- D) Chiari II Malformation
- E) Meningocele



This patient has:

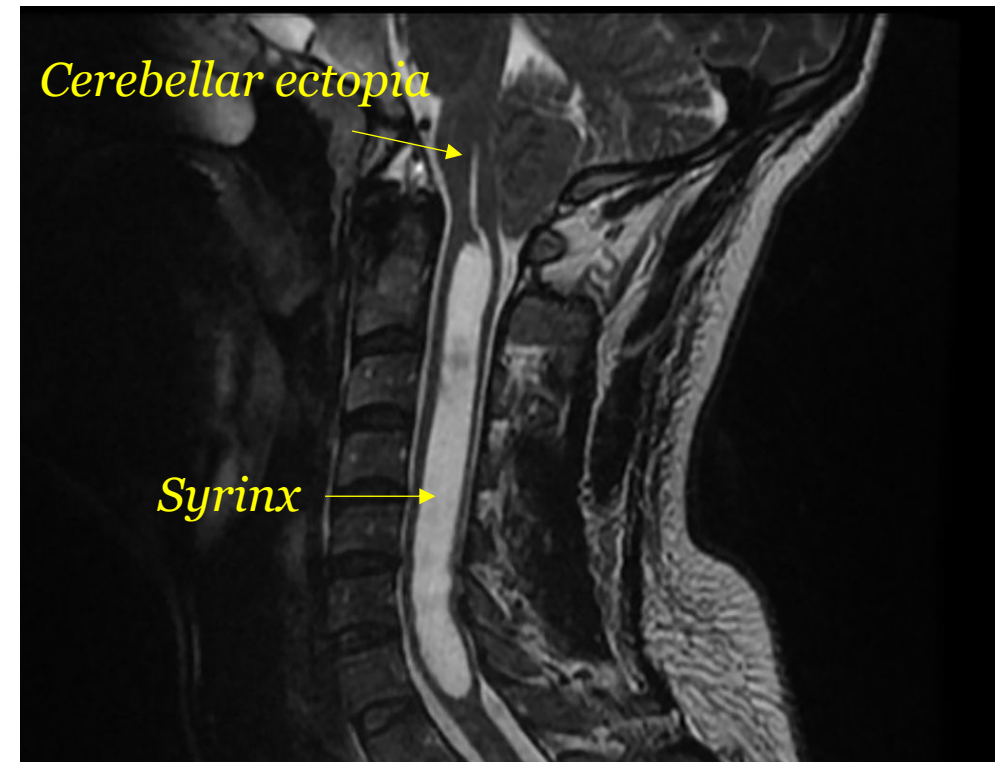
- A) Syringomyelia
- B) Dandy-Walker Malformation
- C) Chiari I malformation
- D) Chiari II Malformation
- E) Meningocele

Patient's MRI



This patient has:

- A) Syringomyelia**
- B) Dandy-Walker Malformation
- C) Chiari I malformation**
- D) Chiari II Malformation
- E) Meningocele



Congenital Neurologic Abnormalities

for USMLE Step One



Benjamin Tanenbaum
UMass Class of 2021

www.12daysinmarch.com
email: Howard@12daysinmarch.com